

# Mobile Mapping System

*State of the art GNSS surveying equipment*

*High productivity as well as cost effective hardware/software solutions*

*To meet the high requirement standards of the global surveying community*

# SATLAB SLS500 Mobile Laser Scanner



## *Key features*

- LiDAR, IMU, GNSS, Camera Sensor Integration
- Standard Data Format outputs
- Multiple Software for different Applications
- Flexible mounting platform
- Compact design, one man operation



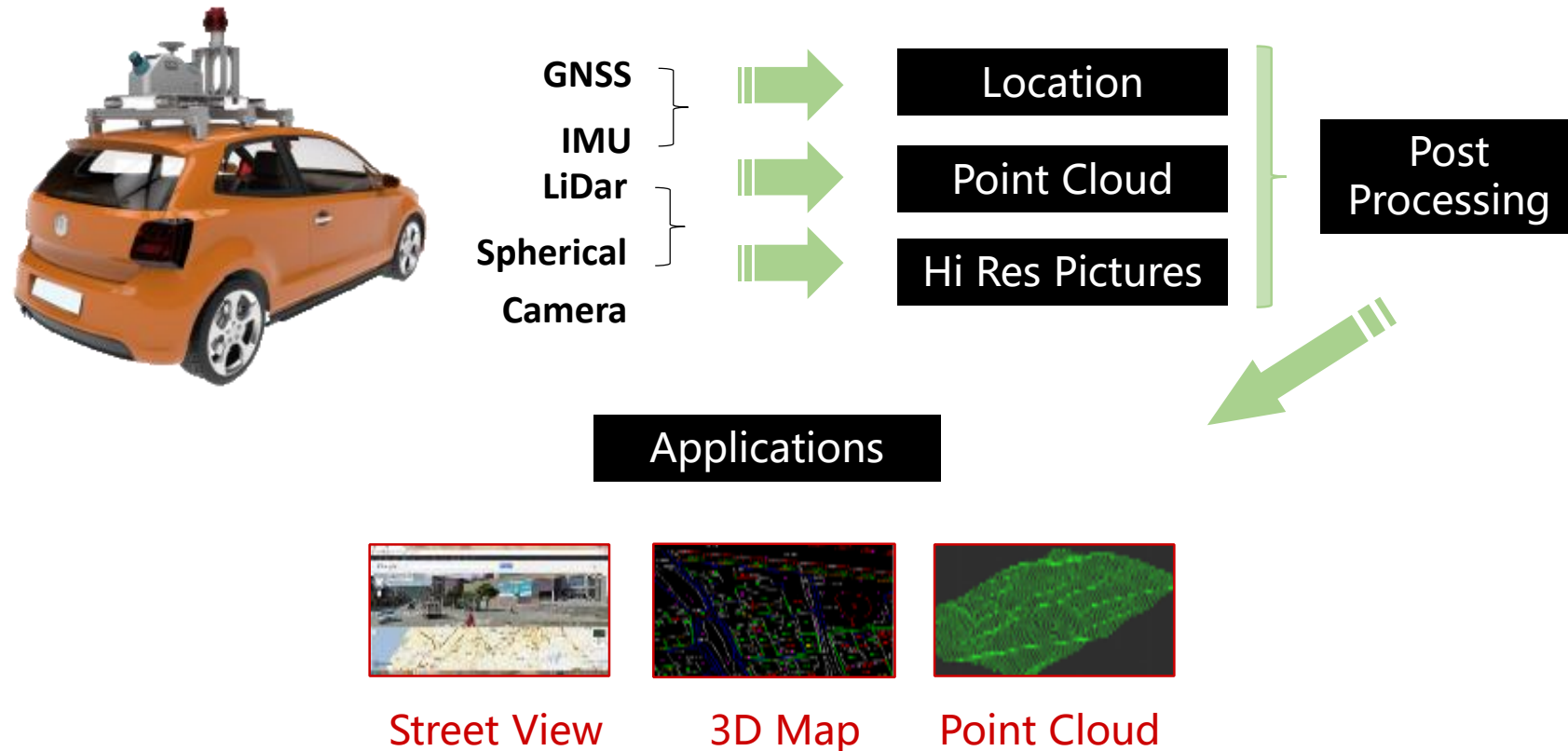
## *Specifications*

- 500K points / second
- 300 m range
- 50mm@50m system accuracy

# SATLAB SLS500 Mobile Laser Scanner



## SATLAB SLS Mobile Laser Scanner Work Flow

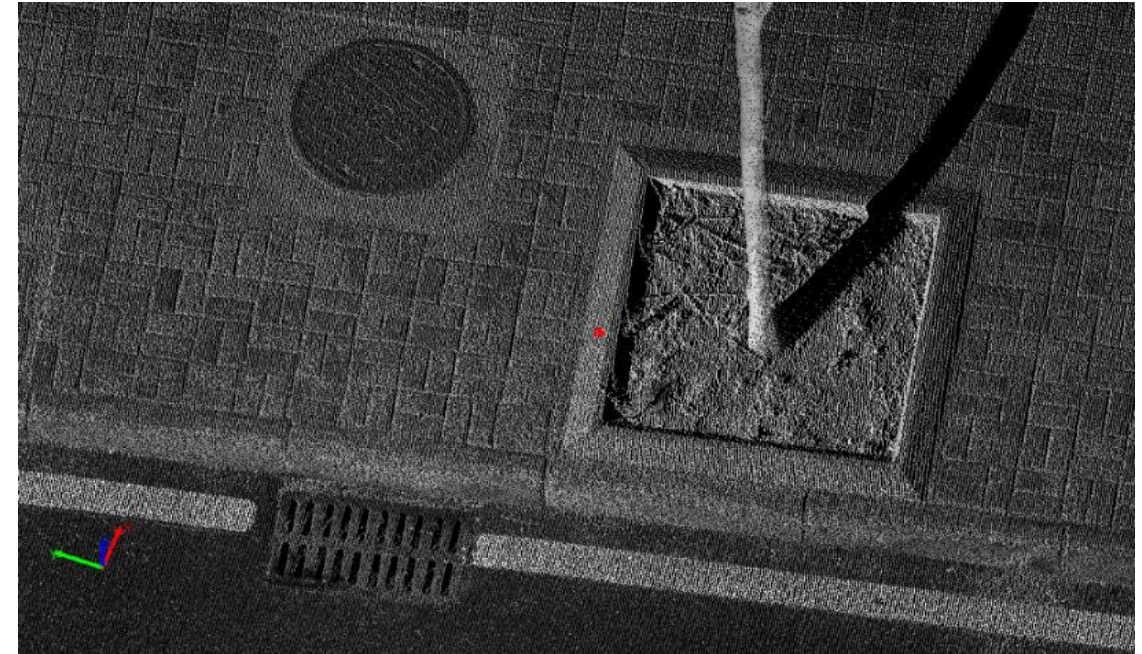




# SATLAB SLS500 Mobile Laser Scanner

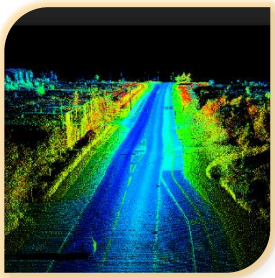


## Point cloud



**Advantage:** High accuracy High density

## Typical applications



Road-based mapping

- Highway built, expansion and completion measurement
- Road surface crack and wear investigation
- Road facilities investigation and maintenance
- Railway and facilities investigation



Urban GIS related

- Urban 3D mapping and modeling
- Landscape investigation and simulation
- Urban infrastructure inspection and management
- Internet street view map
- Building elevation